



www.movinghere.org.uk

200 years of migration to England

West Yorkshire Archives Service

When deviating from printed instructions given at the foot of this page, do not quote the number, but write all the instructions on the respective lines and squares on the order form.



Style No. 48

S.B. RAGLAN, S.B. lapels, fly front, button 3, centre vent, plain seams bluffed edges, 3-piece sleeves, cuffs with 3 buttons, pockets 2 out, with ticket pocket inside bottom right skirt pocket and 1 inside breast pocket. **Lined full, unless otherwise ordered.**

When deviating from printed instructions given at the foot of this page, do not quote the number, but write all the instructions on the respective lines and squares on the order form.



Style No. 49

D.B. OVERCOAT, button 2, show 3, centre vent, **shaped waist**, plain seams, bluffed edges, cuffs with 3 buttons, pockets 3 out, with ticket pocket inside bottom right skirt pocket and 1 inside breast pocket. **Lined full, unless otherwise ordered.**

When deviating from printed instructions given at the foot of this page, do not quote the number, but write all the instructions on the respective lines and squares on the order form.



Style No. 50

D.B. OVERCOAT, button 2. Inverted centre pleat from waist, belt at back, knife pleats in back, plain seams, bluffed edges, cuffs with 3 buttons, pockets 3 out, with ticket pocket inside bottom right skirt pocket and 1 inside breast pocket. **Back lined to waist, foreparts lined full.**

When deviating from printed instructions given at the foot of this page, do not quote the number, but write all the instructions on the respective lines and squares on the order form.



Style No. 51

S.B. SPORTS RAGLAN. Button through, Prussian collar, centre vent, plain seams, bluffed edges, 3-piece sleeves, plain cuffs with 3 buttons, 2 vertical pockets, 1 inside breast and ticket pocket in facing. **Lined full, unless otherwise ordered.**

When deviating from printed instructions given at the foot of this page, do not quote the number, but write all the instructions on the respective lines and squares on the order form.



Style No. 52

S.B. CHESTERFIELD, S.B. lapels, button 3 through, centre vent, $\frac{3}{4}$ raised seams and armholes, $\frac{3}{4}$ swelled edges, split sleeves, three-quarter gauntlet cuffs, 2 out pockets with flaps, ticket pocket in bottom right pocket, and 1 inside breast pocket. **Lined full, unless otherwise ordered.**

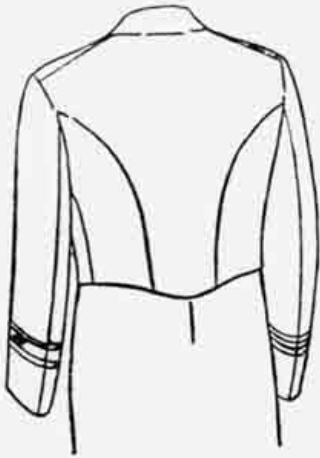
When deviating from printed instructions given at the foot of this page, do not quote the number, but write all the instructions on the respective lines and squares on the order form.



Style No. 53

S.B. RAGLAN, D.B. lapels, button 3 through, centre vent, bluffed edges, plain seams, 3-piece sleeves, plain cuffs with 3 buttons, 2 vertical pockets, and 1 inside breast and ticket pocket in facing. **Lined full, unless otherwise ordered.**

When deviating from printed instructions given at the foot of this page, do not quote the number, but write all the instructions on the respective lines and squares on the order form.



Style No. 54

MESS JACKET.—S.B., with D.B. lapels. Link buttons. Plain seams. Bluffed edges. Whole back, no seam. 4 buttons on each forepart placed as D.B. jacket, plugged through on each side. (The top buttons are about 3½ ins. from front edge and bottom buttons 2¼ ins. The distance between the buttons vertically is about 3 ins.) 4 blind holes in each lapel, and 2 real holes in each front below lapel. 2 pockets at sides 5½ ins. long with welts 1 in. wide, placed about 4½ ins. from the bottom, and 2 inside breast pockets. The point at the bottom of centre back to be just blunted.

Vest. S.B., no collar. Dress shape with 4 buttons. Bluffed edges.

Trousers. Side and fob pockets, plain seams, plain bottoms unless otherwise ordered.

For Naval and Mercantile Marine uniform it is very important that you give the rank of your customer in addition to other particulars such as style of back, length of lapels, pockets, braid, stitching, number and spacing of buttons, whether seen or plugged, etc.

(a) Please confirm particulars with customer.

(b) This style not to be shown from cloths below H quality.

(c) 10/- extra for braided

cuffs as plate. If cuffs require different braiding, suggest to customer to supply his own braid made up on melton, thus ensuring correct trimmings. We make a charge of 2/6 for sewing.

Page Forty-two

When deviating from printed instructions given at the foot of this page, do not quote the number, but write all the instructions on the respective lines and squares on the order form.



Style No. 55

MERCANTILE MARINE AND NAVAL PETTY OFFICER'S UNIFORM, D.B., button 3. A fourth button placed under the lapel, to which one buttonhole is to be worked. Bottom buttons to be in line with pockets. 3 seam back, **no vent**, plain seams, bluffed edges.

2 out flap pockets, out breast (unless otherwise ordered) and 1 inside breast pocket.

Vest. S.B., no collar, bluffed edges, 6 buttons, medium opening. 2 bottom out welt pockets, 1 inside breast with hole and button.

Trousers. Side and lobe pockets, plain seams, plain bottoms unless otherwise ordered.

We do not make or supply Naval caps.

For Naval and Mercantile Marine uniform it is very important that you give the rank of your customer in addition to other particulars such as style of back, length of lapels, pockets, braid, stitching, number and spacing of buttons, whether seven or plugged, etc.

(a) Please confirm particulars with customer.

(b) This style not to be shown from cloth below H quality.

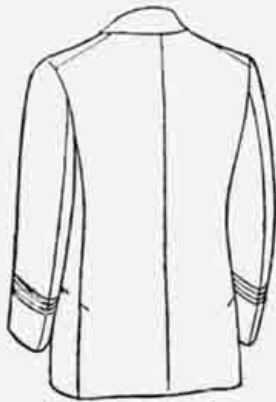
(c) 10 - extra for braided

cuffs as plate. If cuffs require different braiding, suggest to customer to supply his own braid made up on rolls, thus ensuring correct trimmings.

We make a charge of 2.6 for sewing.

Page Forty-three

When deviating from printed instructions given at the foot of this page, do not quote the number, but write all the instructions on the respective lines and squares on the order form.



Style No. 56

MERCANTILE MARINE & NAVAL, UNDRRESS UNIFORM, D.B., button 4. A fifth button to be placed under each lapel the same distance from the top button as the front buttons are apart. The left side buttons to be plugged through, the right side to be sewn on. Jetted pockets on hips in line with bottom buttons. Out breast and 1 inside breast pocket. Seam back, 2 vents 5 ins. long. Bluffed edges. Plain cuffs.

Vest. S.B., no collar, bluffed edges. 6 buttons, medium opening. 2 bottom out welt pockets, 1 inside breast with hole and button.

Trousers. Side and fob pockets, plain seams, plain bottoms unless otherwise ordered.

We do not make or supply Naval caps.

For Naval and Mercantile Marine uniform it is very important that you give the rank of your customer in addition to other particulars such as style of back, length of lapels, pockets, braid, stitching, number and spacing of buttons, whether sewn or plugged, etc.

(a) Please confirm particulars with customer.

(b) This style not to be shown from cloths below H quality.

(c) 10/- extra for braided

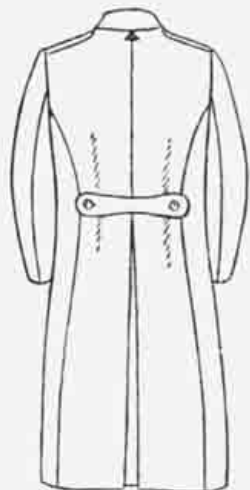
cuffs as plate. If cuffs require different braiding, suggest to customer to supply his own braid made up on melton, thus ensuring correct trimmings.

We make a charge of 2/6 for sewing.

Page Forty-four

When deviating from printed instructions given at the foot of this page, do not quote the number, but write all the instructions on the respective lines and squares on the order form.

Page Forty-five



Style No. 57

MERCANTILE MARINE OR BRIDGE COAT, D.B., rolling to button 4, but additional 2 holes in the lapels and 2 buttons on each forepart, 6 in all, to button 5 when required, or to button 6 up to the throat as Prussian, with stand and fall collar and hook and eye in collar seam. The bottom button must not come below the level of the hips. The buttons must be 7 ins. apart at the breast, and 5 ins. at the waist horizontally. The 6 buttons on each forepart must be framed between 2 rows of stitching, stopping at the bottom button and turning at right angles right up to the front. 1 inverted pleat in back and also a vent 18 ins. long with 3 small plain buttons and "blind" fly. Small tabs inside left forepart below bottom buttons to keep skirts together. Plain seams, bluffed edges. 2 bottom pockets with flaps 8½ ins. by 3½ ins., 2 inside breast pockets. Epaulettes on shoulders for rank stripes when worn. Collar stand 1½ ins., fall 2½ ins. Tab on collar. Shaped belt at back about 8 ins. long, 2½ ins. wide at sides, and 1½ ins. in centre, with buttonhole on each end and regulation buttons on side seams.

We do not make or supply Naval caps.

For Naval and Mercantile Marine uniform it is very important that you give the rank of your customer in addition to other particulars such as style of back, length of lapels, pockets, braid, stitching, number and spacing of buttons, whether sewn or plugged, etc.

(a) Please confirm particulars with customer.

(b) This style not to be shown from cloths below H quality.

(c) 10/- extra for braided

epaulettes or plate. If different braiding is required, suggest to customer to supply his own braid made up on melton, then ensuring correct trimmings.

When deviating from printed instructions given at the foot of this page, do not quote the number, but write all the instructions on the respective lines and squares on the order form.



Style No. 58

- Coat.** STEWARD'S UNIFORM. S.B., button 3, eyelet holes, top eyelet through for link. **Top button to link across second and third button of vest when finished.** Plain roll collar, bluffed edges, plain seams, 3 seam back, no vent, no buttons on cuffs, pockets 2 bottom jetted, 1 inside breast, and ticket.
- Vest.** S.B., 4 pockets, bluffed edges, no chain hole, to button 5 eyelet holes. Do not quote vest opening. Fixed vest opening must be regulated to make top button of jacket link across centre of 2-3 vest buttons.
- Trousers.** Side and hip pockets, unlined, plain seams, plain bottoms.

(a) Please confirm particulars with customer special trimmings.

(b) We do not make or supply Naval caps.

(c) An estimate should be obtained for any

(d) This style not to be shown from cloths below H quality.

Page Forty-six

When deviating from printed instructions given at the foot of this page, do not quote the number, but write all the instructions on the respective lines and squares on the order form.



Style No. 59

PAGE BOY'S TUNIC. 1 row plated ball buttons down centre (please state if chrome or gilt plated required), bluffed edges, cuffs with 2 buttons, 1 inside breast pocket. **State on order form size of linen collar worn.**

Trousers. Side pockets, unlined, plain seams.

(a) We do not make or supply Page Boys' caps.

(b) An estimate should be obtained for any special trimmings.

(c) This style not to be shown from cloths below H quality.

When deviating from printed instructions given at the foot of this page, do not quote the number, but write all the instructions on the respective lines and squares on the order form.



Style No. 60

Coat. S.B. PATROL JACKET, whole back, $\frac{1}{2}$ stitched edges plain seams. Stand collar $1\frac{1}{4}$ ins. deep, square corners at neck, fastened with two hooks and eyes. Collar to be lined black Italian, 2 top patch pockets with Vandyke flaps to button. Top patches to be $7\frac{1}{2}$ ins. deep, 6 ins. wide and to have 1 in. pleat down centre. The flap to be 3 ins. deep at centre point. Bottom patches $8\frac{1}{2}$ ins. deep, $8\frac{1}{2}$ ins. wide at the top and $8\frac{1}{2}$ ins. at the bottom. The coat to fasten with 5 buttons on the front, the second button from the collar to be in line with the breast flaps, the bottom button to be 1 in. above the bottom flaps; epaulettes on shoulders fastening with button at neck. Sleeves with all-round formed cuff with point in centre of top side, $5\frac{1}{2}$ ins. deep in centre and $2\frac{1}{2}$ ins. deep at seams and undersides. **Lined full unless otherwise ordered.**

Trousers. Side pockets, unlined, plain seams, plain bottoms.

(a) Please confirm particulars with customer.

(b) An estimate should be obtained for any special trimmings.

(c) This style not to be shown from cloths below H quality.

When deviating from printed instructions given at the foot of this page, do not quote the number, but write all the instructions on the respective lines and squares on the order form.



Style No. 61

D.B. CHAUFFEUR'S REEFER, button 3, **bone buttons**, unless otherwise ordered, seam back, no vent, $\frac{1}{2}$ swelled edges, plain seams, cuffs with 3 buttons, pockets 3 out, with ticket pocket in bottom right skirt pocket and 1 inside breast pocket.

Vest. S.B., 4 pockets, $\frac{1}{2}$ swelled edges, no chain hole, bone buttons unless otherwise ordered.

Trousers. Side and hip pockets, unlined, plain seams, P.T.U. bottoms.

(a) We do not make or supply Chauffeurs' caps. (b) An estimate should be obtained for any special trimmings.

When deviating from printed instructions given at the foot of this page, do not quote the number, but write all the instructions on the respective lines and squares on the order form.



Style No. 62

D.B. CHAUFFEUR'S OVERCOAT, button 3, ordinary **bone buttons, unless otherwise ordered**, centre vent, half-belt with 2 holes and buttons, plain seams, $\frac{1}{2}$ swelled edges, tabs on cuffs, 2 bottom pockets with ticket pocket in bottom right skirt pocket, 1 inside breast pocket. **Lined full, unless otherwise ordered.**

(a) We do not make or supply Chauffeurs' caps.

(b) An estimate should be obtained for any special trimmings.